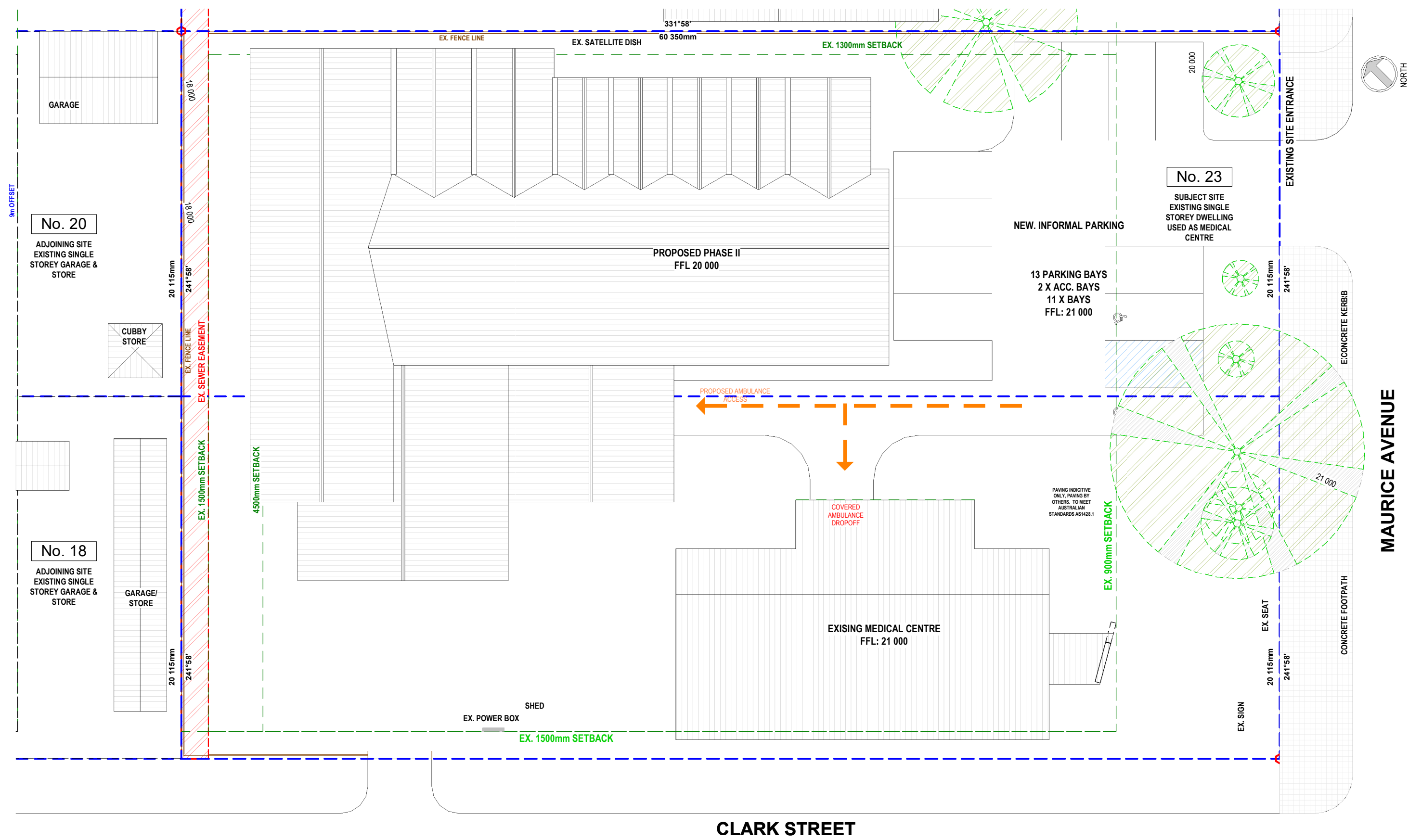
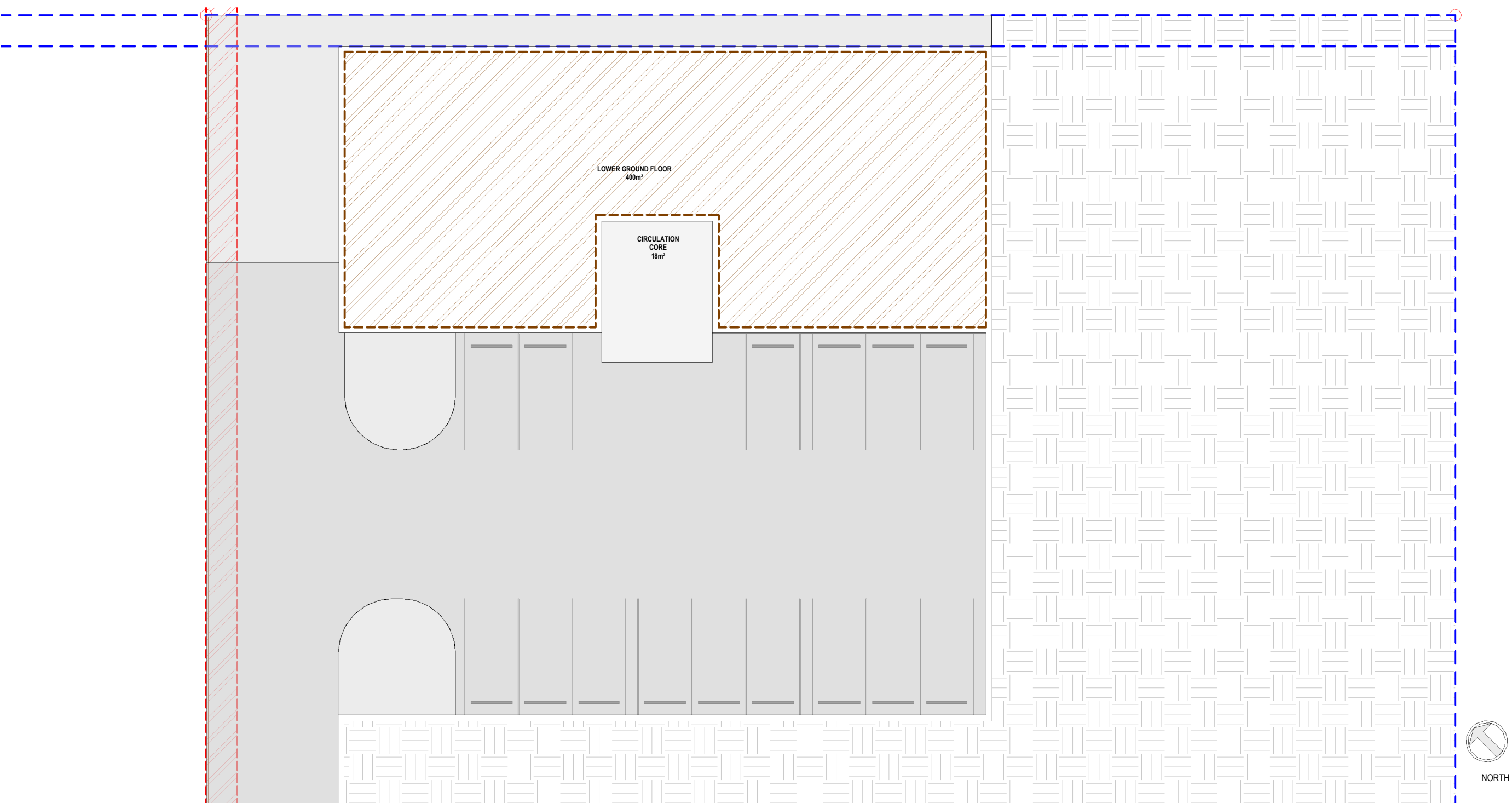


PROPOSED SITE DEVELOPMENT PLAN FOR NEW MALLACOOTA MEDICAL CRITICAL CARE & TREATMENT CENTRE & COMPLETED PROJECT IMAGES OF MALLACOOTA MEDICAL CENTRE - COMPLETED JUNE 2019



1 SK002. Site Development Plan Phase II
Scale 1:200



2 0. Lower Ground Floor
Scale 1:200

COMPLETED PROJECT - JUNE 2019 MALLACOOTA MEDICAL CENTRE - BAL 40 RATED



TOTAL BUILDING AREA	
LOWER GROUND FLOOR PLAN	446m ²
PARKING/DRIVEWAY	872m ²
GROUND FLOOR PLAN	735m ²
DECK AREA	130m ²

ACCOMMODATION SCHEDULE: LOWER GROUND FLOOR	
NURSES ACCOMMODATION UNIT	
LAUNDRY	
WORKSHOP	
REFUSE	
KITCHEN	
STORE	
CIRCULATION	
TOTAL INTERNAL AREA SCHEDULE	436m ²

ACCOMMODATION SCHEDULE: GROUND FLOOR	
AIRLOCK	3.5m ²
CIRCULATION	162m ²
RECEPTION	9m ²
ADMIN	7m ²
ACC. WC	6.2m ²
AMB. WC	3m ²
COLLATING	4.7m ²
IMAGING	32m ²
STORE	6.3m ²
TEATMENT ROOM	40m ²
DIRTY UTILITY	20m ²
HYDRO POOL & GYM AREA	64m ²
TRANSITIONAL BED 01	17.8m ²
EN-SUITE 01	5.3m ²
TRANSITIONAL BED 02	17.8m ²
EN-SUITE 02	5.3m ²
TRANSITIONAL BED 03	17.8m ²
EN-SUITE 03	5.3m ²
TRANSITIONAL BED 04	17.8m ²
EN-SUITE 04	5.3m ²
LOUNGE	40m ²
RESPIRE 01	17.6m ²
ENSUITE	5.3m ²
RESPIRE 02	17.6m ²
ENSUITE	5.3m ²
CONSULT ROOM 01	14.6m ²
CONSULT ROOM 02	14.6m ²
CONSULT ROOM 03	14.6m ²
CONSULT ROOM 04	14.6m ²
CIRCULATION CORE	18m ²
STORE	4m ²
CLEAN UTILITY/LINEN	8.8m ²
ALLIED SERVICES	11.5m ²
NURSES STATION	18m ²
STAFF WC	4.5m ²
CLEANERS STORE	3.6m ²
STORE	3.6m ²
TOTAL INTERNAL AREA SCHEDULE	666.3m ²

NOTES

FIGURED DIMENSIONS ONLY ARE TO BE TAKEN FROM THIS DRAWING. ALL DIMENSIONS ARE TO BE CHECKED ON SITE BEFORE ANY WORK COMMENCES. IF ANY DOUBT ASK. "HCPA" IS TO BE NOTIFIED OF ANY DISCREPANCIES IN DIMENSIONS AND SETTINGS OUT OF WORK FOR RESOLUTION. THIS DRAWING MUST BE READ IN CONJUNCTION WITH ALL OTHER ARCHITECTS DETAIL DRAWINGS, SCHEDULES AND SPECIFICATIONS. ALL WORKS TO FULLY COMPLY WITH AUSTRALIAN STANDARDS (AS) AND THE NATIONAL CONSTRUCTION CODE (NCC).

COPYRIGHT

• COPYRIGHT OF DESIGNS SHOWN HEREON IS RETAINED BY "HCPA" DESIGN AND MUST NOT BE ALTERED, REPRODUCED OR COPIED WHOLLY OR IN ANY PART WITHOUT WRITTEN PERMISSION.
• REPRODUCTION OF THE WHOLE OR PART OF THIS DOCUMENT CONSTITUTES AN INFRINGEMENT OF COPYRIGHT.
• IDEAS AND CONCEPTS CONTAINED IN THIS DOCUMENT ARE CONFIDENTIAL.

CLIENT

CHIRP

PROJECT

Mallacoota Medical Critical & Treatment Centre
21-23 Maurice Avenue
Mallacoota

DRAWING TITLE

Site Development Plan Phase II

ISSUE

DATE

DESCRIPTION

2 2020 11 27 REV2 Sketch Plan
1 2020 01 20 REV1 Sketch Plan

STATUS

FOR CLIENT APPROVAL

DRAWN BY

DH

CHECKED BY

BF

PROJECT NO.

H200117-025

DATE

2020 11 27

REVISION

2

DRAWING NO

SK-002

SCALE@A1

NTS

REVISION

2

DRAWING NO

SK-002